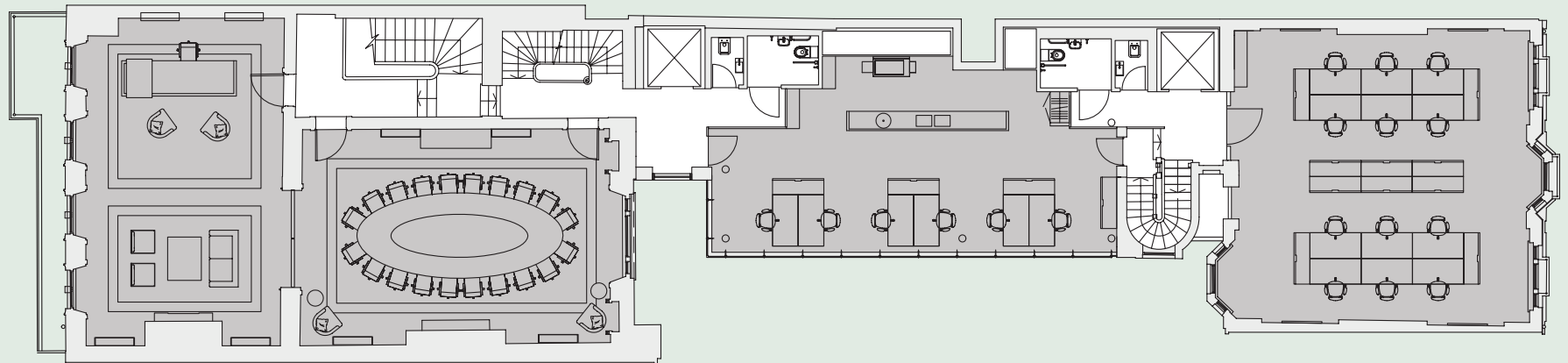


FIRST FLOOR OPEN PLAN AND PRINCIPAL OFFICE

2,941 sq ft (273.3 sq m)



1 x CEO office

18 x open plan workstations

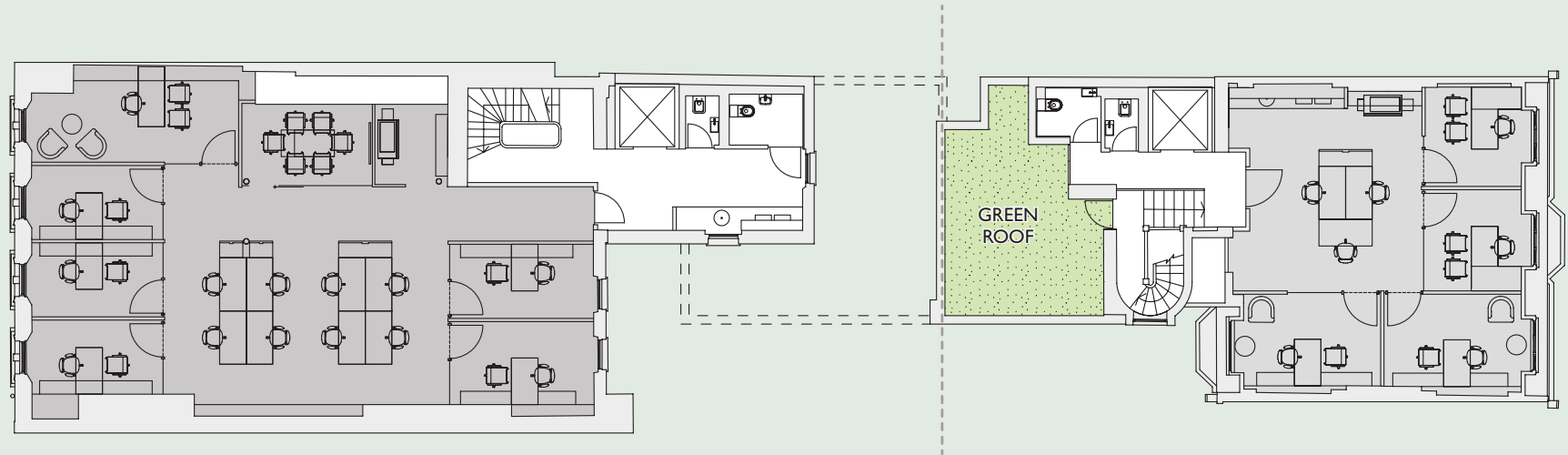
1 x 20 person board room

Total occupancy 19

Occupancy ratio 1:14.4 sq m

THIRD FLOOR CELLULAR PLAN

Total floor area 2,391 sq ft (222.1 sq m)



69 GROSVENOR STREET

Third floor 1,572 sq ft (146 sq m)

8 x open plan workstations
6 x 1 person offices
1 x 6 person meeting room

Total occupancy 14
Occupancy ratio 1:10.4 sq m

24 GROSVENOR HILL

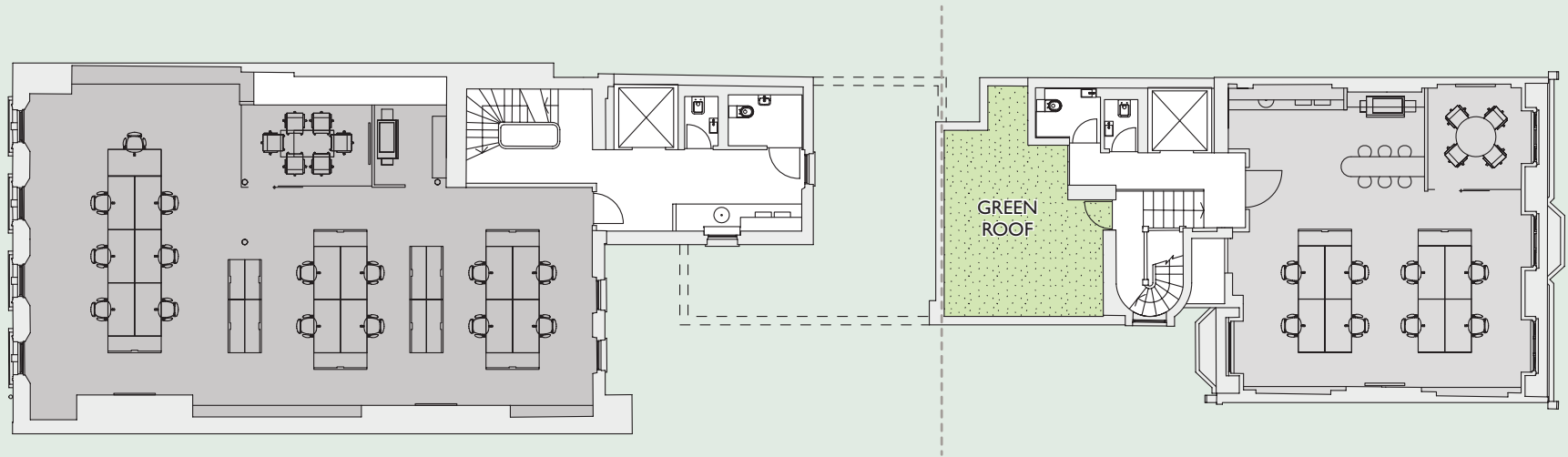
Fourth floor 819 sq ft (76 sq m)

3 x open plan workstations
4 x 1 person offices

Total occupancy 7
Occupancy ratio 1:10.8 sq m

THIRD FLOOR CELLULAR PLAN

Total floor area 2,391 sq ft (222.1 sq m)



69 GROSVENOR STREET

Third floor 1,572 sq ft (146 sq m)

15 x open plan workstations
1 x 6 person meeting room
Total occupancy 15
Occupancy ratio 1:9.7 sq m

24 GROSVENOR HILL

Fourth floor 819 sq ft (76 sq m)

8 x open plan workstations
1 x 4 person meeting room
Total occupancy 8
Occupancy ratio 1:9.5 sq m